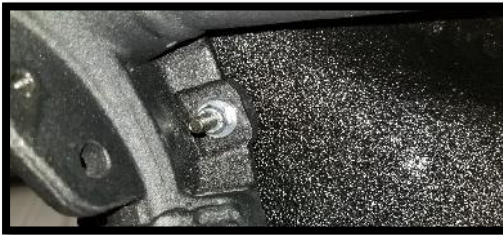




1. & 2. SET THE TOP ON THE ROLL CAGE. MOVE THE TOP AS FAR FORWARD AS IT WILL GO. DRILL ¼" HOLE IN THE TOP AT THE FRONT MOUNTING LOCATION ON THE ROLL BAR.



3. & 4. DRILL A ¼" HOLE AT THE REAR MOUNTING LOCATION OF THE ROLL BAR.



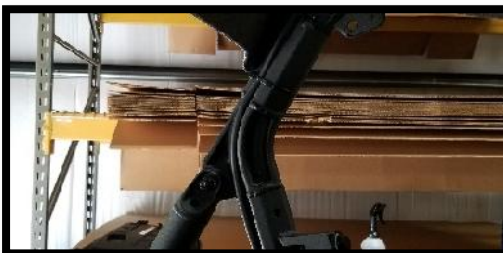
5. & 6. USE THE LARGE BLACK WASHERS AND ¼" x 1.5" BOLT TO SECURE THE BACK OF THE TOP. THE SMALL SILVER WASHER GOES ON THE INSIDE.



7. 8. 9. USE THE ¼" x 1.5" BOLT AND LARGE BLACK WASHER TO SECURE THE FRONT OF THE TOP. THE SMALLER BLACK WASHER GOES ON THE INSIDE. THE LIGHTBAR ALSO MOUNTS HERE IF EQUIPTED.



10. RUN THE POWER WIRE DOWN THE BACK OF THE ROLL CAGE TO THE BATTERY UNDER THE DRIVER'S SEAT.



11. FUSE HOLDER MUST BE PROPERLY INSTALLED WITHIN 18" OF BATTERY DURING STEREO TOP INSTALLATION! Warranty of stereo top and components may be voided if fuse holder is not used. See pictures illustrating proper installation of fuse holder. Contact us at 903-873-5902 with any questions concerning installation or if missing any installation hardware. Connect the battery.



Hardware Kit:

(4) LARGE BLACK WASHERS

(2) SMALL BLACK WASHERS

(4) ¼" x 1.5" BOLTS

(2) SMALL SILVER WASHERS

(4) ¼" NYLON LOCK NUTS

ANY QUESTIONS OR HELP PLEASE CALL: 903-873-5902 OR EMAIL INFO@AUDIOFORMZ.COM



CAN-AM MAVERICK SPORT/TRAIL

We highly recommend the installation of this stereo top to be performed by an authorized AudioFormz dealer. Warranty of stereo top and/or components may be voided if not installed correctly.