



TRX4SS

Materials:

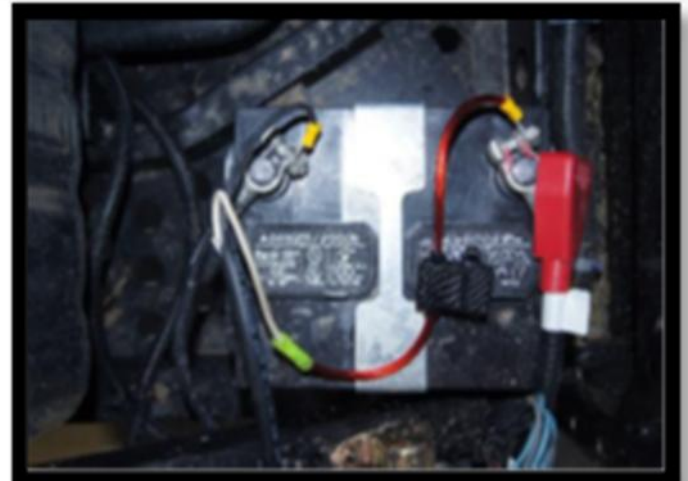
- 4- 1 5/8" Clamps**
- 4 – Self-tapping Screw**
- 2- 1 3/4" Clamps**
- 2- 1/4" Nylon Lock Nuts**
- 2- LG Washers (black)**
- 2- SM Washers**
- 2- 1 1/2" Blots**

**For any other questions or concerns,
Please contact us at (903)873-5902
info@audioformz.com**



Set the top on the Roll Cage.

1. Install the 1 ¾" clamps towards the rear of the top using the 1 ½" x ¼" bolts.
2. Locate the white dot above the rear seats.
3. Use the self-tapping screws to install the clamp



4. Locate the white dot at the front of the top. Use the self-tapping screws to install the clamp.
5. Run the power wire down the front of the cage to the battery.
6. Connect the power wire to the battery.