



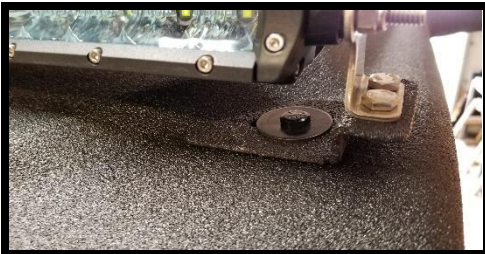
1A. & 1B. SET THE TOP ON THE ROLL CAGE. MOVE IT ALL THE WAY FORWARD. PLACE THE 1 3/4" CLAMPS ON THE FRONT OF THE ROLL CAGE. THEY WILL NEED TO BE PLACED UNDER THE PRE-DRILLED HOLES LOCATED AT THE FRONT OF THE TOP. DRILL A HOLE FOR MOUNTING AS SHOWN AT THE REAR OF THE TOP. THE 2" X 1/4" BOLT AND LG. FENDER WASHER WILL BE USED AT THIS LOCATION.



1B.



2A., 2B. & 2C. MOUNT THE BRACKET AS SHOWN. THEN PLACE THE 1 1/2" X 1/4" BOLT AND SMALL BLK WASHER IN THE BRACKET AND THEN THROUGH THE PRE-DRILLED HOLES ON THE TOP. THIS BOLT ALSO NEEDS TO GO THRU THE 1 3/4" CLAMP.



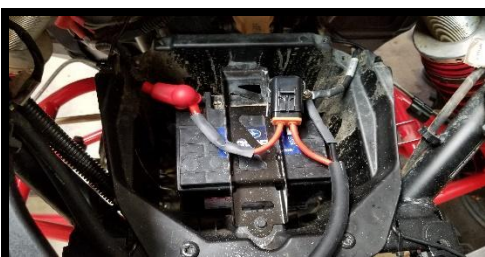
2B.



2C.



3. RUN THE POWER CABLE DOWN THE PASSENGER SIDE FRONT ROLL BAR TO THE BATTERY LOCATION.



4. CONNECT THE FUSE HOLDER. THEN CONNECT THE WIRES TO THE BATTERY.



RS1

HARDWARE:

(2) Clamps

(2) 1 ½" x ¼" BOLTS

(2) 2" x ¼" BOLTS

(2) LARGE FENDER WASHERS

(2) SMALL FENDER WASHERS

(4) ¼" NUTS

(4) SMALL ¼" WASHER

ANY QUESTIONS? CALL AUDIOFORMZ OFFICE: 903-873-5902

OR EMAIL INFO@AUDIOFORMZ.COM