

**1. PLACE THE TOP ON THE MACHINE.**

**2. CENTER THE TOP ON THE ROLL CAGE AND PUSH IT FORWARD. TO INSURE THE TOP IS AGAINST BACK SIDE OF THE CAGE.**

**3. START AT THE REAR OF THE CAGE, USE A 1/4" DRILL BIT AND DRILL THROUGH THE FACTORY HOLES LOCATED ON THE CAGE.**

**4. LOCATE THE CENTER FACTORY HOLES USE 1/4" DRILL BIT AND DRILL THROUGH THE FACTORY HOLES AS SHOWN.**

**5. LOCATE THE FRONT HOLES USE 1/4" DRILL BIT AND DRILL THROUGH THE FACTORY HOLES.**

**6. USE THE PROVIDED HARDWARE TO SECURE TOP TO THE CAGE. BOLT GOING DOWN USE 1 1/4" WASHER ON THE TOP AND 1" WASHER ON THE BOTTOM w/ NYLON NUT. AS PICTURE SHOWS. TIGHTEN ALL HARDWARE AT THIS TIME.**

**7. RUN THE POWER WIRE/WIRES DOWN CAGE TO THE BATTERY LOCATED UNDER DRIVER REAR SEAT.**

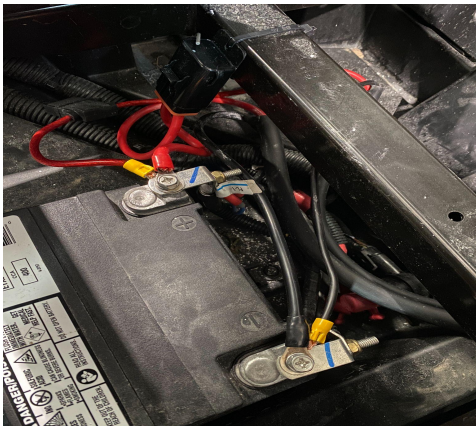
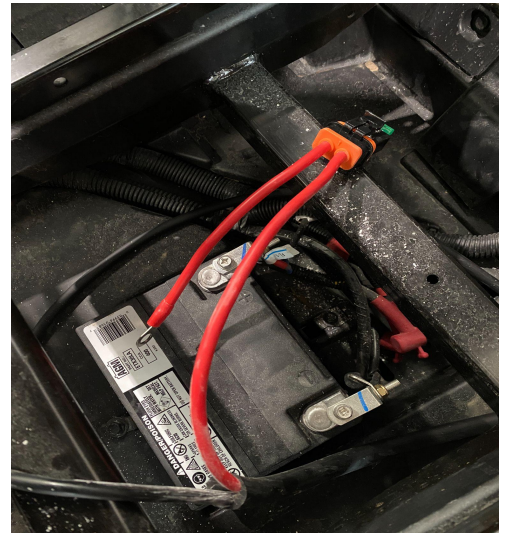




8. INSTALL PROPER FUSE HOLDERS WHICH ARE PROVIDED w/ THE TOP. **RED IS POSITIVE +** AND BLACK IS NEGATIVE -

9. MAKE SURE BATTERY TERMINALS ARE TIGHT WHEN REINSTALLING.

10. ZIP TIE THE WIRE TO THE INSIDE OF THE CAGE. MAKE SURE THE WIRES WILL NOT GET PINCHED OR CUT.







# AUDIOFORMZ

## COMMANDER/ SPT MAX

We highly recommend the installation of this stereo top to be performed by an authorized AudioFormz dealer. Warranty of stereo top and/or components may be voided if not installed correctly.

### HARDWARE KIT:

- (6) 1 1/2" BOLTS
- (6) 1 1/4" WASHERS (MIDDLE/REAR)
- (2) 1" BLK WASHERS (FRONT)
- (4) SILVER WASHERS
- (6) NYLON LOCK NUTS
- (4) ZIPTIES

### TOOLS NEEDED:

- DRILL
- 7/16" WRENCH
- 7/16" SOCKET
- 1/4" DRILL BIT
- WIRE CUTTERS/CRIMPERS

The AF8FH is designed to be used with up to two 30 amp ATC style fuses for a total of 60 amps of protection. Do NOT use fuses rated for more than a total of 60 amps with this fuse holder. AudioFormz supplies the correct size wiring and amp fuses with each stereo top. FUSE HOLDER MUST BE PROPERLY INSTALLED WITHIN 18" OF BATTERY DURING STEREO TOP INSTALLATION! Warranty of stereo top and components may be voided if fuse holder is not used. See pictures illustrating proper installation of fuse holders. Contact us at 903-873-5902 with any questions concerning installation or if missing any installation hardware.